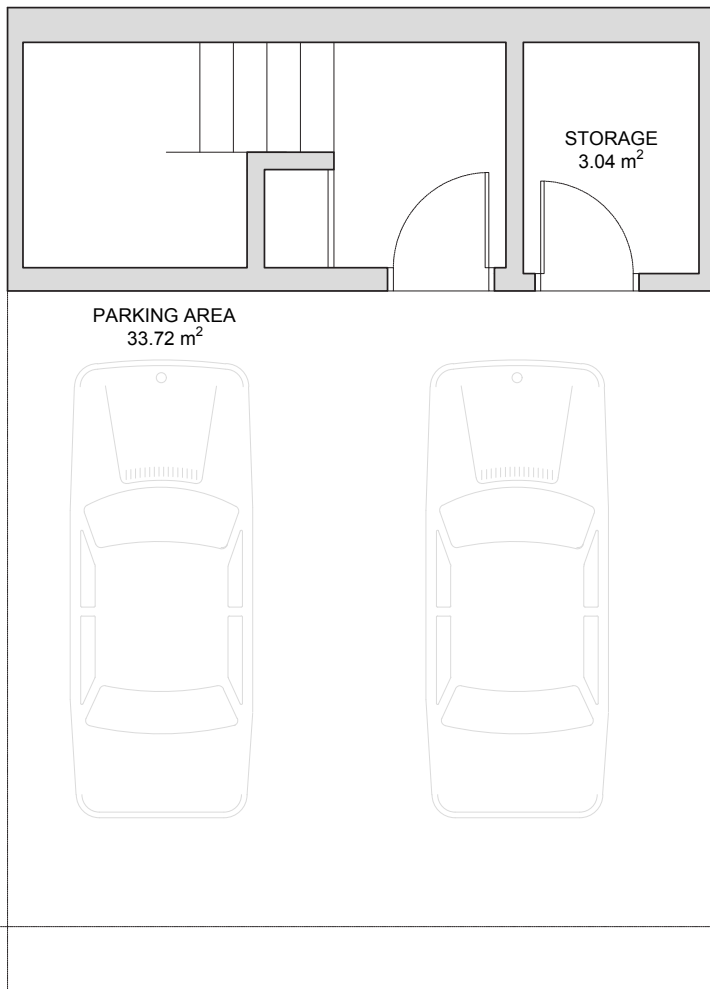


Ttl. Constructed + Terrace: 242.66 m²

Ttl. Constructed: 165.50 m²

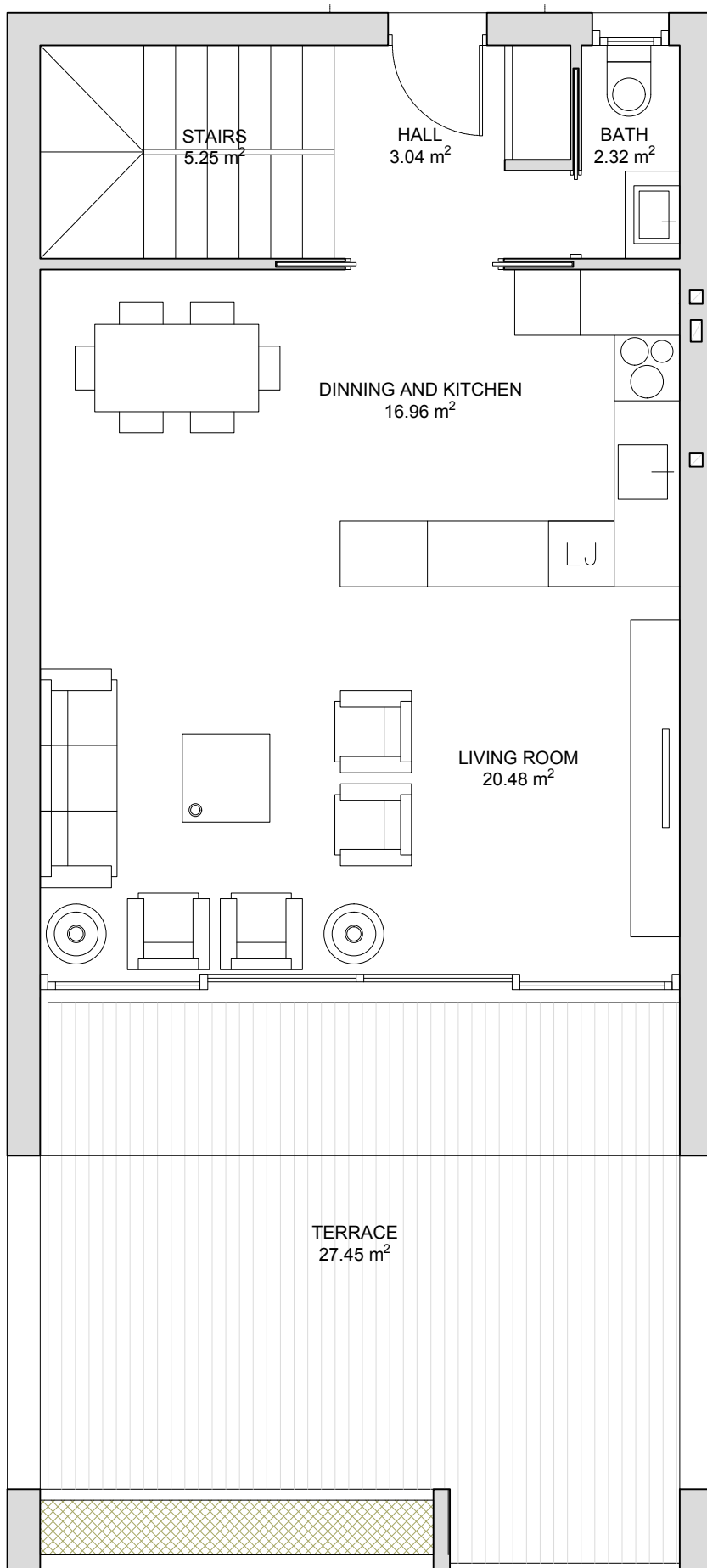
Ttl. Terrace Surface: 77.16 m²



Basement

Constructed Surface: 49.94m²

Internal Util. Surface: 36.76m²

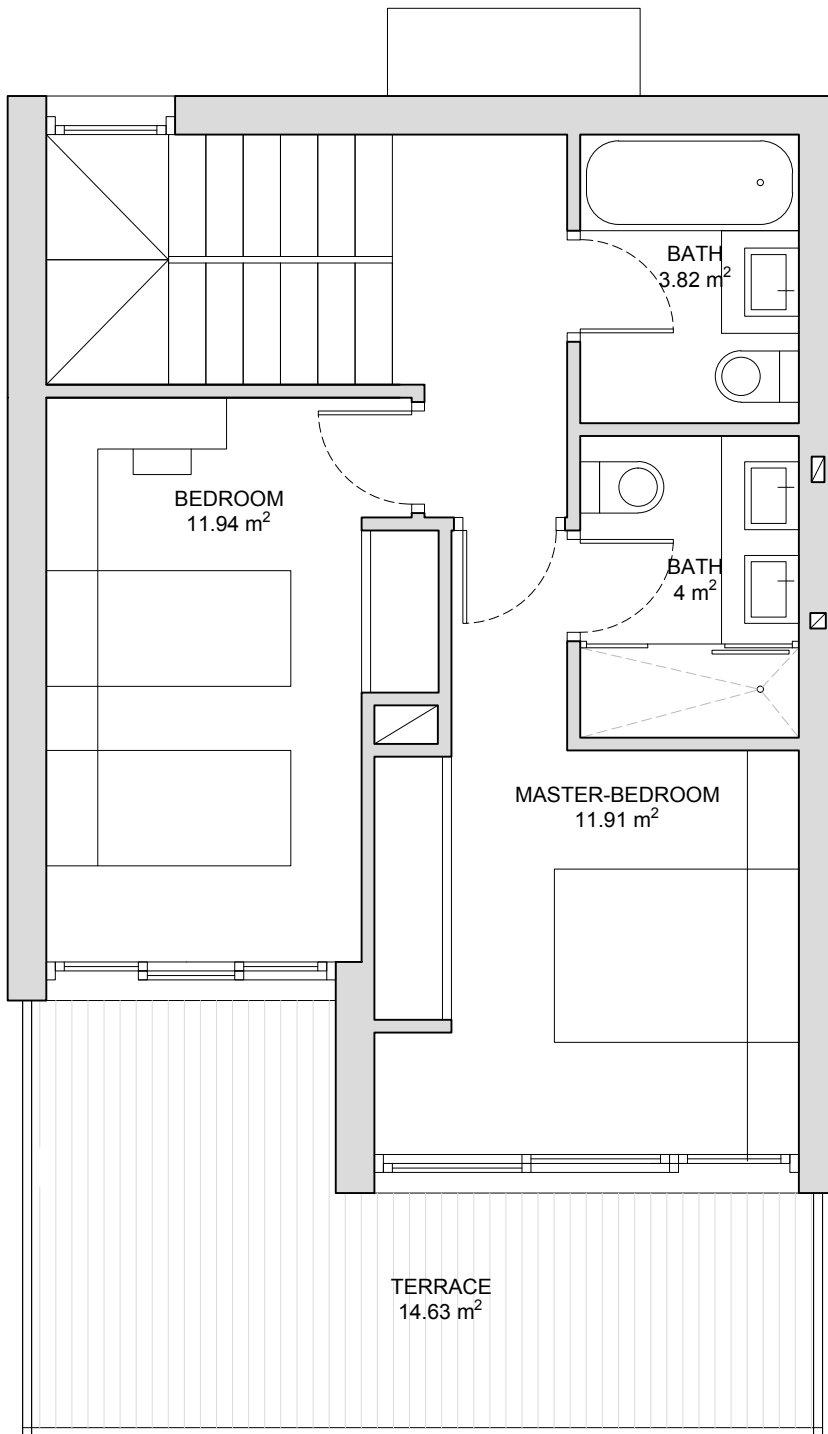


Ground Floor

Constructed Surface: 55.65m²

Internal Util. Surface: 48.05m²

Terrace Surface: 27.45m²

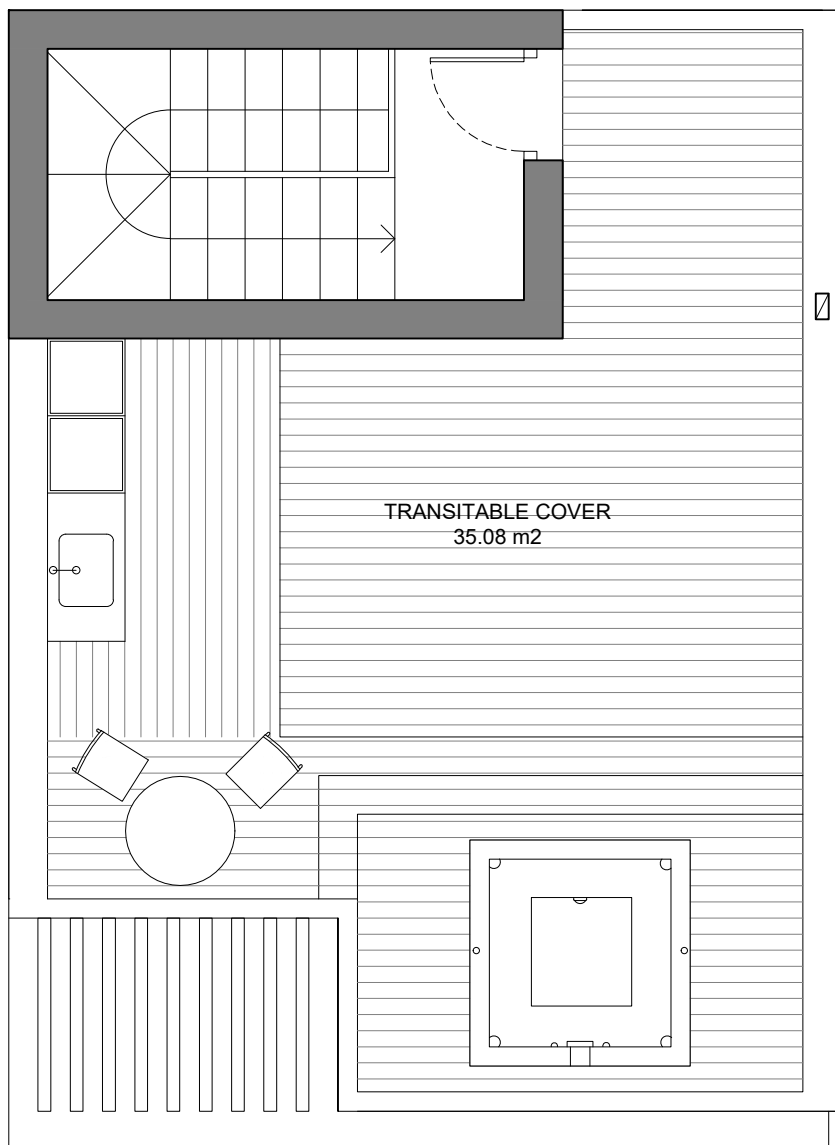


First Floor

Constructed Surface: 48.98m²

Internal Util. Surface: 29.57m²

Terrace Surface: 14.63m²



Roof Terrace

Constructed Surface: 10.93m²

Terrace Surface: 35.08m²